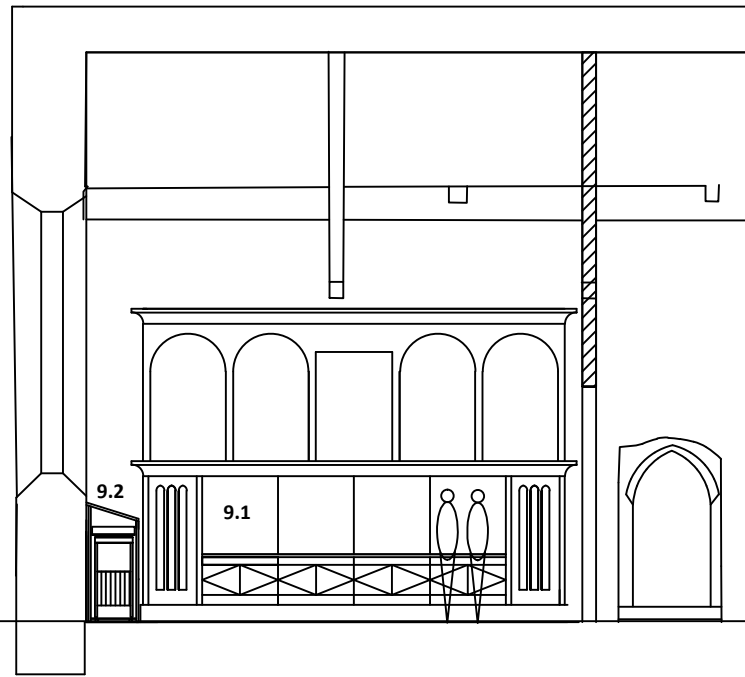


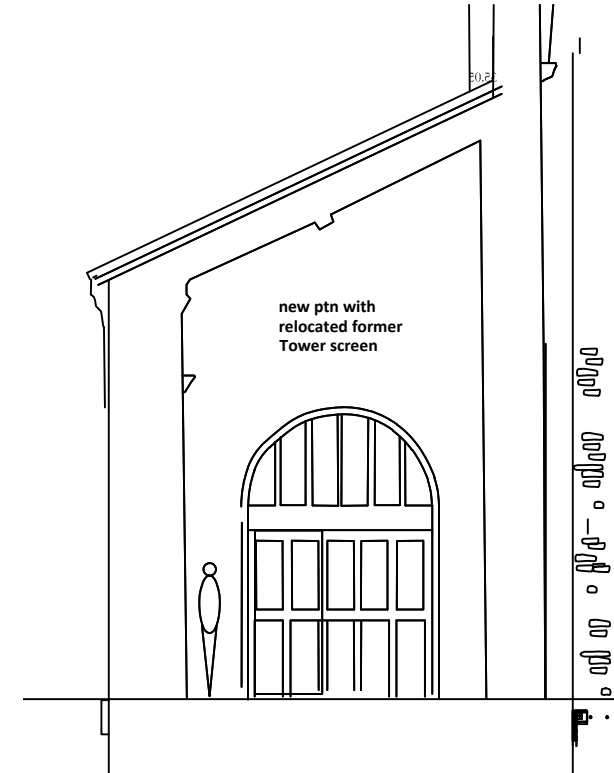
All Saints Winterton, Diocese of Lincoln, Grade 1 - Alterations and Extension.



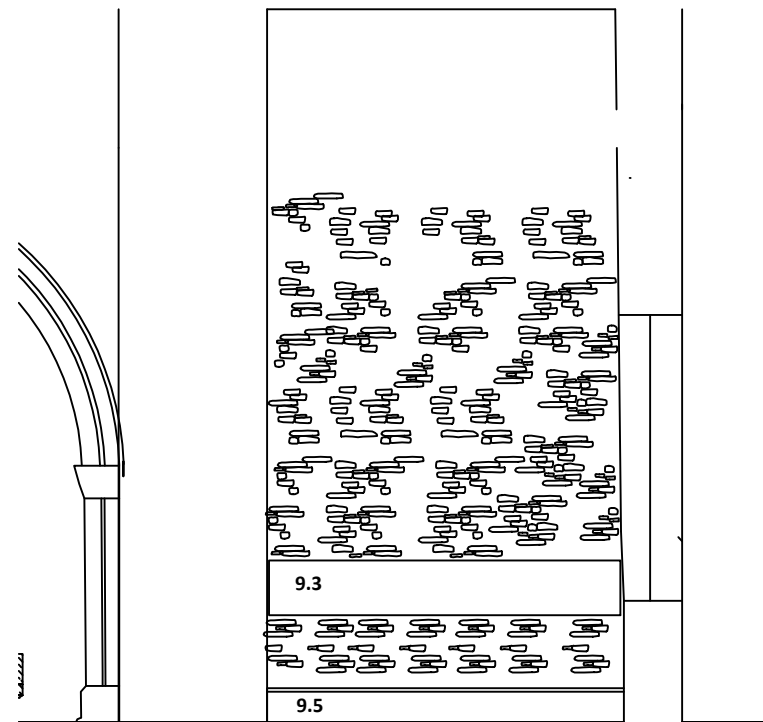
West Elevation



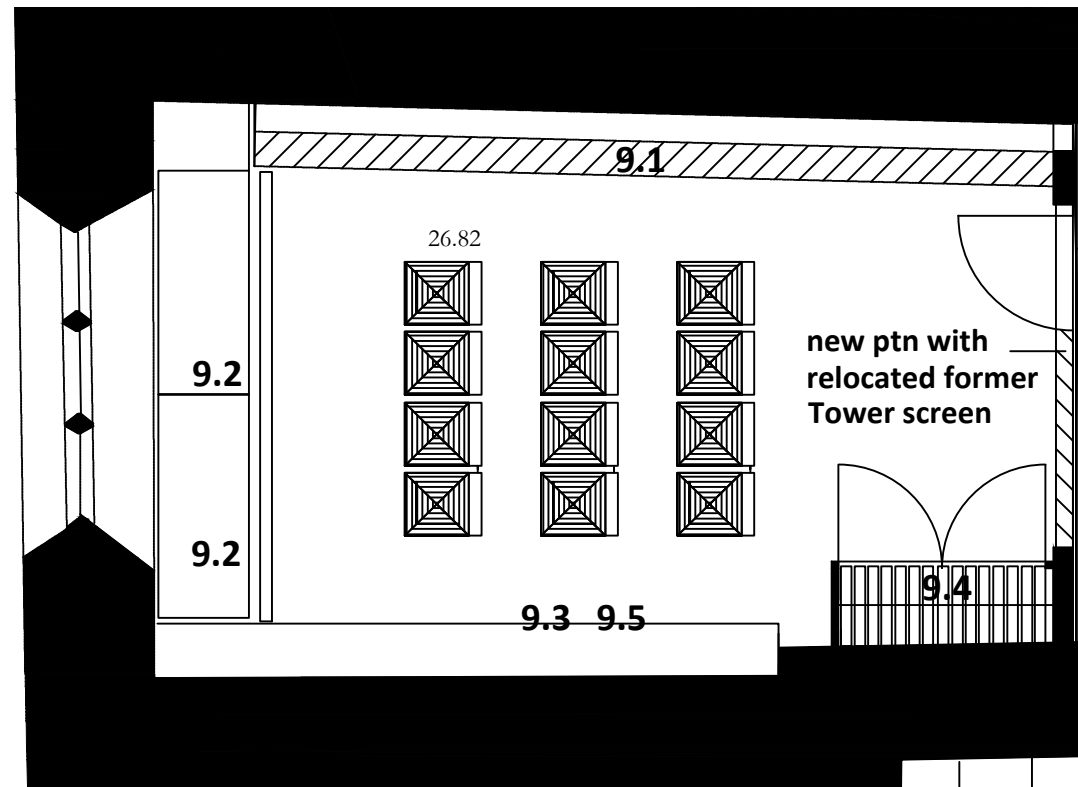
North Elevation



East Elevation



South Elevation



Ground Floor Plan

HERITAGE ROOM

1. PREPARATION

Remove loose furniture for Employers disposal
Carefully remove Commandment Boards and Choir Robe cabinet to Conservator/Joiner workshop.

Remove redundant Gas Radiator + pipework + fittings.

Relocate Safe to Vestry

Carefully lift existing Floor boards and set aside for re-use.

2. FLOOR

Repair joists and sleeper walls as necessary.
Rectify underfloor ventilation and include air vents to south and west walls.
Reinstate existing boards on 6mm plywood incorporating underfloor heating trays and insulation between joists.

3. WALLS

Remove areas of failed plaster to north and west walls.
Replaster with 3 coat NHL 3.5 haired lime plaster.
Decorate over existing and new surfaces with Quartz primer and 2cts fully breathable quartz silica based paint.

Form floor to ceiling height stud partition clad in gypsum plasterboard and scribed to walls + roof.
Insulation within studwork. Form arch opening for relocation of glazed screen.

3.CEILING

Decorate sloping roof soffit with 2cts matching wood stain.

4.DOORS

Reglaze former Tower Arch Screen and relocate in new partition.

5. WINDOWS

Remove failed cement render to mullions, jambs, head and repair with lime plastic mortar compound
Stone replacement as identified in QIR.

Conservation of historic saddle bars.

6. HEATING

Install underfloor 'wet system' heating + insulation.

7. LIGHTING + A/V

Rewire for General lighting and Interpretation A/V - see proposals.

8. POWER

Rewire for general power distribution. S+F detection.

9. FITTINGS

1. Reform former Choir Robes cabinet into display cabinet for West Gallery instruments. Base unit cupboards below with drawers. Remount Commandment Boards/Reredos with oil painting centrally located. Ladder Store with access from N Aisle side of partition formed within unit.

2. Chairs Stores: 2no 1.3m high quality Oak cabinets each containing 32no folding Oak seats with seafrass seats on trolley - as Treske of Thirsk. Map display cases and retractable Flat Screen to top.

3. Graphics facsimile of Tithe map fixed to Tower wall.

4. Choir Robes cabinet formed in Oak.

5. Children's graphics panel below bench.