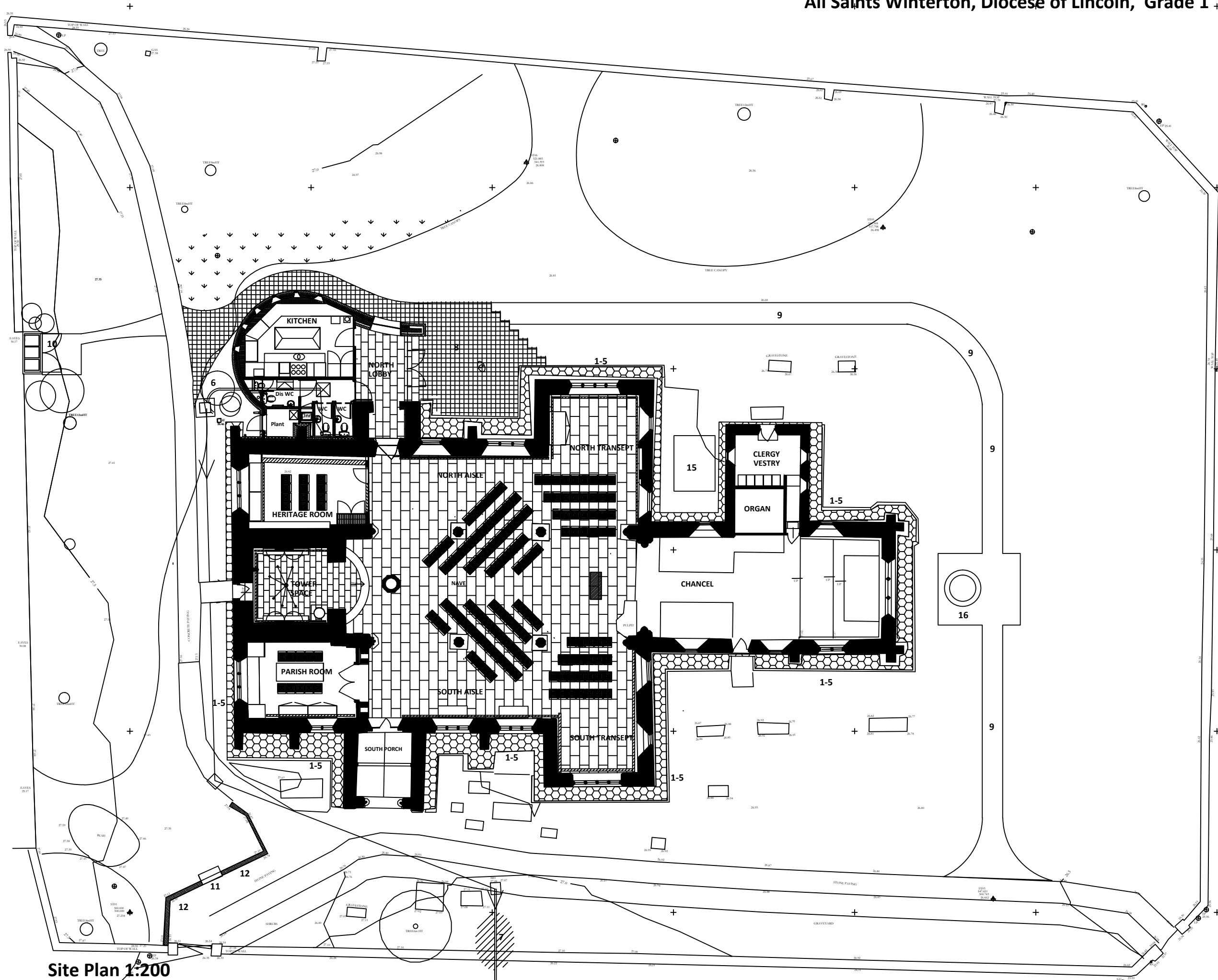


All Saints Winterton, Diocese of Lincoln, Grade 1 + Alterations and Extension.



- LEGEND** 540N
- EXTERNAL WORKS + DRAINAGE**
- ARCHAEOLOGIST TO OVERSEE ALL EXCAVATIONS**
1. Remove concrete channel to church perimeter
 2. Replace rainwater disposal system with new cast iron.
 3. Form new perimeter land drain
 4. Form evaporation margin with large gravel + Geo Membrane
 5. Form new surface water drainage to discharge into Combined System.
 6. Form new Foul Water drainage + rebuild ex manhole.
 7. Repair main drainage connection at LA Sewer.
 8. Form new paved terrace to North lobby re-using former Nave C19 sandstone paving or new PC paving approx 450 x 450 bedded on 75 sand with mortar joints on 150 hardcore.
 9. Form new paved path from north west to south west around east as described in 8 above.
 10. Form Bin Store + Planted enclosure + PC concrete path bedded on sand on 150 hardcore, to west boundary, north side.
 11. New stone bench to south west entrance.
 12. Repairs to walling.
 13. Conservation to monuments.
 14. Exterior lighting.
 15. Excavate and break up buried structures from former Boiler House west of Vestry. Backfill with hardcore and 600mm topsoil
 16. Form new decorative paved area around War Memorial to detail

Site Plan 1:200